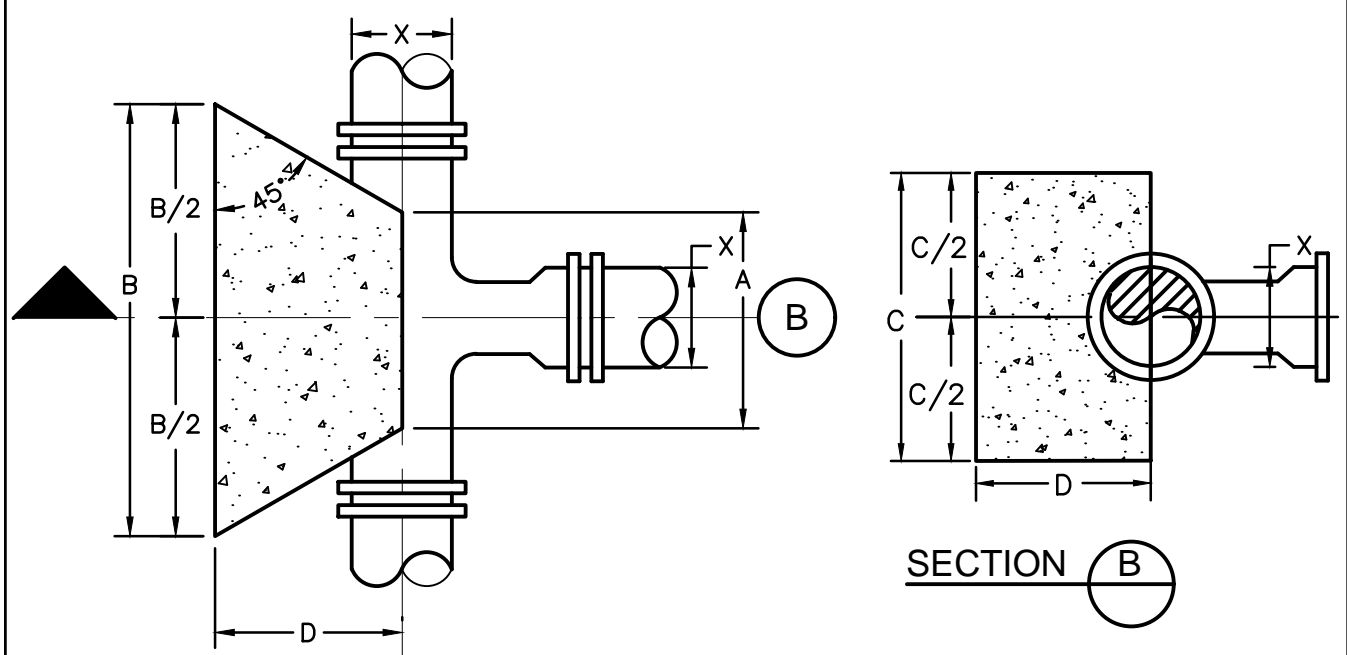


UNBALANCED TEE OR PLUG - PLAN



TEE - PLAN

NOTE:
MEGALUGS OR MJ-FIELD LOK WITH BLOCKING
REQUIRED ON ALL FITTINGS. SHEET 1 of 5

NOTE:
DEVELOPER/CONTRACTOR IS REQUIRED TO PERFORM HYDROSTATIC PRESSURE
TESTS IN ACCORDANCE WITH SECTION 02660-"WATER DISTRIBUTION SYSTEMS",
OF THE TOWN OF BRASELTON STANDARD SPECIFICATIONS (LATEST EDITION).

TOWN OF BRASELTON WATER & SEWER DEPARTMENTS

JOB TITLE STANDARD DETAIL	SHEET TITLE THRUST BLOCKING DIMENSIONS (200 psi LINE PRESSURE)	DRN. BY: EMI	REV. NO.	BY	DATE
	DETAIL No. W-1	CKD BY:			
		APPD. BY:			
		DATE: MARCH 2004			
		FILE No. 03033 W-4.dwg	SCALE: N.T.S.		