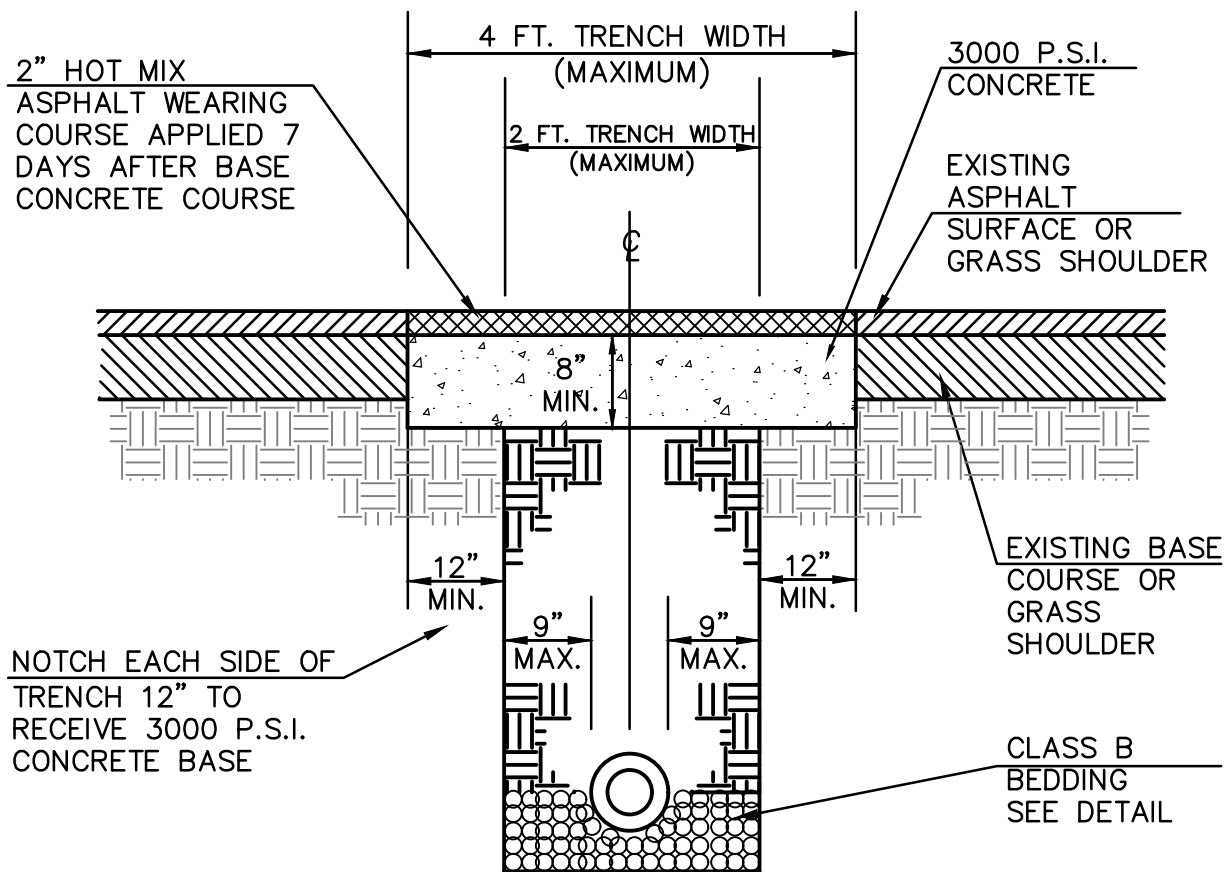


**GENERAL NOTES:**

1. PROVIDE STRAIGHT VERTICAL SAW CUTS TO A NEAT LINE AS DIRECTED BY FIELD ENGINEER.
2. CONCRETE SURFACES TO BE CLEANED AND BITUMINOUS TACK OR PRIME COAT APPLIED BEFORE PLACEMENT OF ASPHALTIC TOPPING.
3. CONTRACTOR TO UTILIZE STEEL RUNNING PLATES OR OTHER APPROVED METHODS DURING CURING OF CONCRETE. PLATES TO BE REMOVED UPON SATISFACTION OF FIELD ENGINEER.
4. WHEN INSTALLING PIPELINE AT EDGE OF ROAD LANE—WITHIN 3—FEET OF EDGE OF PAVEMENT, THIS PAVEMENT CUT AND REPLACEMENT MUST EXTEND AND INCLUDE THE ENTIRE WAY TO THE EDGE OF THE PAVEMENT.
5. SEE SPECIFICATION SECTIONS 02225 AND 02523 FOR ADDITIONAL INFORMATION AND PROCEDURES FOR PAVEMENT CUT AND REPAIR.
6. CONSTRUCTION METHODS AND MATERIALS SHALL BE IN ACCORDANCE WITH G.D.O.T. STANDARD SPECIFICATIONS FOR CONSTRUCTION OF ROADS AND BRIDGES, LATEST EDITION.



**TOWN OF BRASELTON WATER & SEWER DEPARTMENTS**

JOB TITLE  STANDARD DETAIL	SHEET TITLE  <b>PAVEMENT CUT REPAIR DETAIL</b>	DRN. BY: EMI	REV. NO.	BY	DATE
		CKD BY:	A	EMI	1/9/09
		APPD. BY:			
		DATE: SEP. 2004			
		DETAIL No. S-31	FILE No. 03033\S-31.dwg	SCALE: N.T.S.	