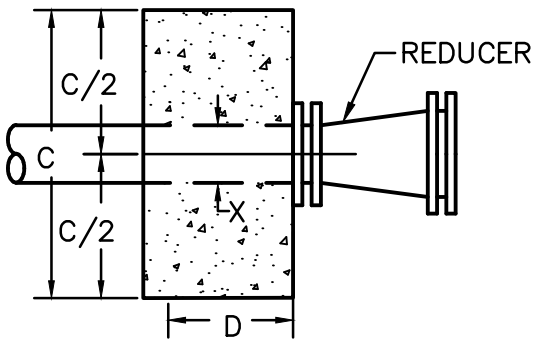
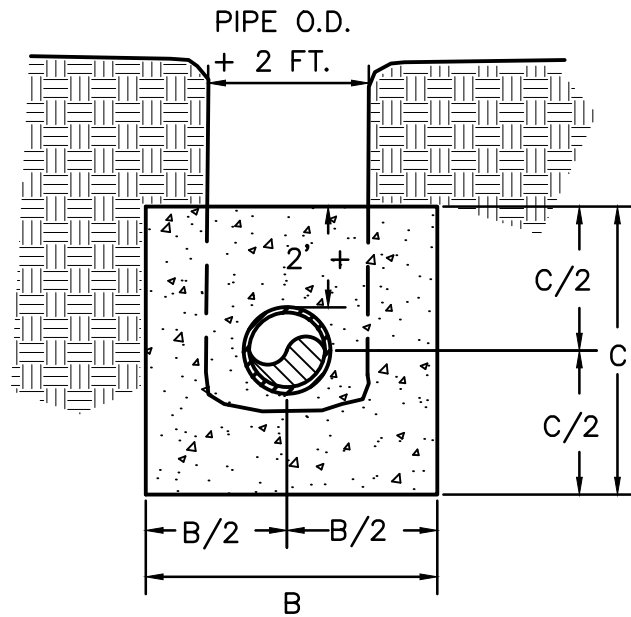


**REDUCER - PLAN**



**SECTION D**



**SECTION E**

NOTE:  
MEGALUGS OR MJ-FIELD LOK WITH BLOCKING  
REQUIRED ON ALL FITTINGS.

NOTE:  
DEVELOPER/CONTRACTOR IS REQUIRED TO PERFORM HYDROSTATIC PRESSURE  
TESTS IN ACCORDANCE WITH SECTION 02661-"REUSE WATER DISTRIBUTION  
SYSTEMS", OF THE TOWN OF BRASELTON STANDARD SPECIFICATIONS (LATEST  
EDITION).

**SHEET 3 of 5**

**TOWN OF BRASELTON WATER & SEWER DEPARTMENTS**

JOB TITLE  STANDARD DETAIL	SHEET TITLE  THRUST BLOCKING DIMENSIONS (200 psi LINE PRESSURE)	DRN. BY: EMI	REV. NO.	BY	DATE
		CKD BY:	A	EMI	7/30/18
		APPD. BY:			
		DATE: MARCH 2004			
		FILE No. 03033 R-4.dwg	SCALE: N.T.S.		
DETAIL No. R-3					